

Exhaust fumes

## Hose Reels GTE and GTS

### 5, 7½ m or 10 m in ø80 – ø250 mm

The strict requirements to a healthy work environment in the workshop demand the use of local exhaust ventilation. For this purpose the Geovent Hose reels types GTE and GTS are the optimum choice.

The Geovent Hose Reels, types GTE or GTS, are used for extraction of exhaust gases, welding smoke etc. The advantage of using this principle, is that an extraction hose is always available and rolled out hoses do not take up space on the floor.

Geovent hose reels types GTE (Electric) and GTS (Spring driven) are based on a common platform, so that the Hose Reel (type GTS) can easily be upgraded from spring driven to electric.

We produce the Hose Reels in width 750, 1000 and 1400mm, and it is supplied with hoses ø80, ø100, ø125, ø150, and 250 mm in lengths up to 15m.

The common platform means that we can offer fast delivery, high flexibility, and a high quality product at competitive prices. Please find more information about special editions of the Hose Reel GTE on the next page.

The Hose reel type GTS is provided with a strong steel spring, that works by spring loading in the same way as a roller blind.

The Hose Reel is a sturdy, yet light construction, consisting of galvanized and painted steel parts, which ensures a long service life. A spherical ball bearing gives a trouble-free and easy operation.

The Geovent Hose Reels are practically maintenance-free.

However, the various moving parts have to be controlled for wear and correct mounting regularly.



Geovent Hose Reel in use in a car repairshop.



GTE = Remote control and electric motors  
GTS = Manual spring driven



Hose reel GTE ø200 mm  
Remote control and electric motors

Hose reel GTE and GTS - 5, 7,5 m 10 or 15 meter in  $\varnothing 80 - \varnothing 250\text{mm}$

#### Technical data:

- Galvanized parts: Drum, cover, bracket and all nuts and bolts are galvanized.
- Painted parts: Side panels on the drum are as standard powder painted gray RAL 7015.
- Hose: TPE exhaust hose with nylon spiral. The hose can be crossed to a certain extent. exhaust temperatures up to  $170^{\circ}\text{C}$ , short term  $200^{\circ}\text{C}$ , when used correctly with nozzle and sufficient air from the outside (approx. 50%).
- Special hoses on request.
- For higher temperatures, please see page 5.

#### GTS – same data as above, but with:

The GTS hose reel is mounted with a hanging hose piece so that the hose can be reached by the operator. Note that the GTS-750-10-100 will have a minimum of 2.5 metres of hose hanging down.

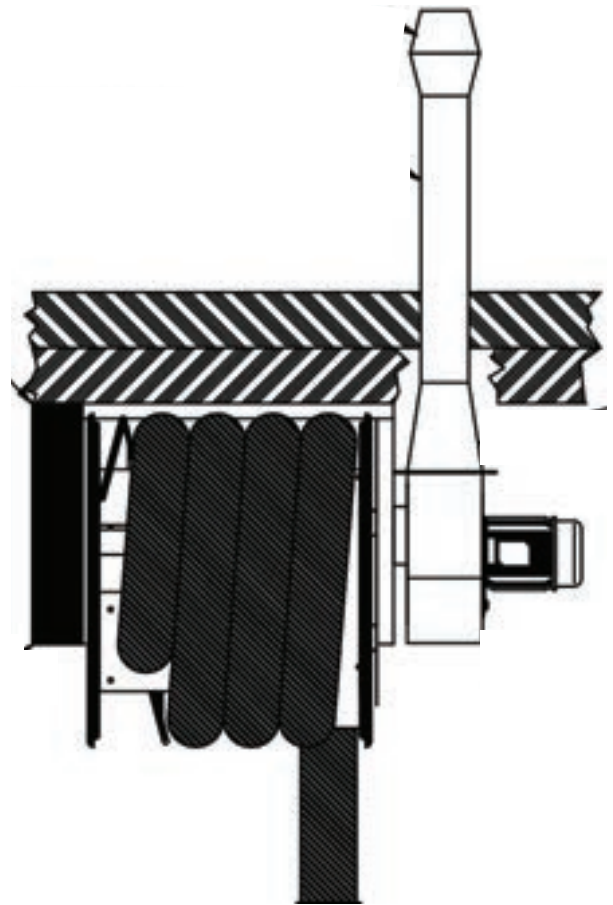
- Heavy duty steel spiral which stands a pulling force of 15 kg. NB: Max. mounting height: min. 5 m.

#### GTE – same data as above, but with:

- Power supply: 230V/50-60Hz.
  - Power Consumption: 170W.
  - Frequency: 433,92MHz.
  - Protection: IP 20 (dry rooms).
  - Lift capacity about 25 kg.
- NB: There may be problems with the control by the remote control due to interference of e.g. overhead cranes.

The remote control transmits on a frequency of 433.92MHz. If other equipment transmits on this frequency, it can significantly reduce the signal.

In such cases, we recommend buying the hose reel with a solution where the remote control and motor transmit on the frequency 868 MHz or a system that transmits on 2.4 MHz, or alternatively to choose a hanging pressure.



#### Accessories:

- Switch for automatic start/stop - 04-293.
- Nozzles - See our large selection.
- All accessories are sold separately.

#### Flange fan MSQ:

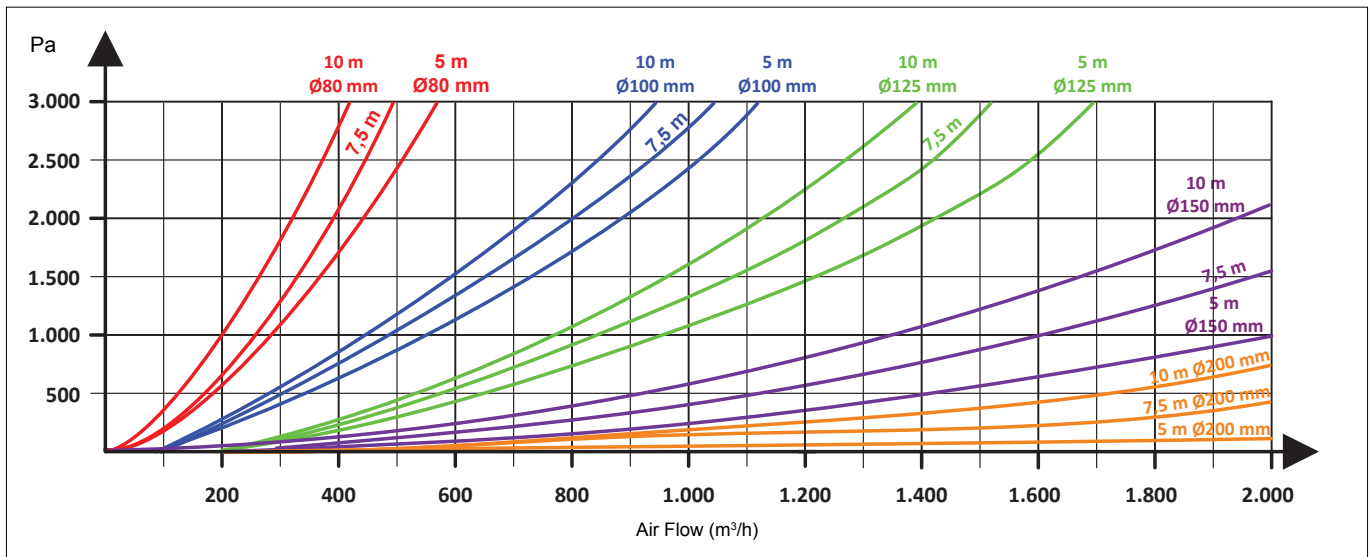
The Hose reels types GTE and GTS from Geovent can have a MSQ-200 fan with automatic start/stop of the fan directly connected.

The fan is mounted using a mounting flange and 4 pcs. M8 screws. When the hose is rolled out, the fan starts until the hose is rolled back on to the hose reel. (It requires use of a switch for automatic start/stop. This switch has to be bought separately).

An outlet flange is mounted  $\varnothing 200 / \varnothing 160$  (going from square to round). The exhaust air will be extracted out through the wall or the ceiling. We can supply Hose reel and fan fully assembled - a plug and play solution. In this case you should select a 1 phase (1x230V) fan and a switch for automatic start/stop.

Hose reel GTE and GTS - 5, 7,5 m 10 or 15 meter in  $\varnothing 80 - \varnothing 250\text{mm}$

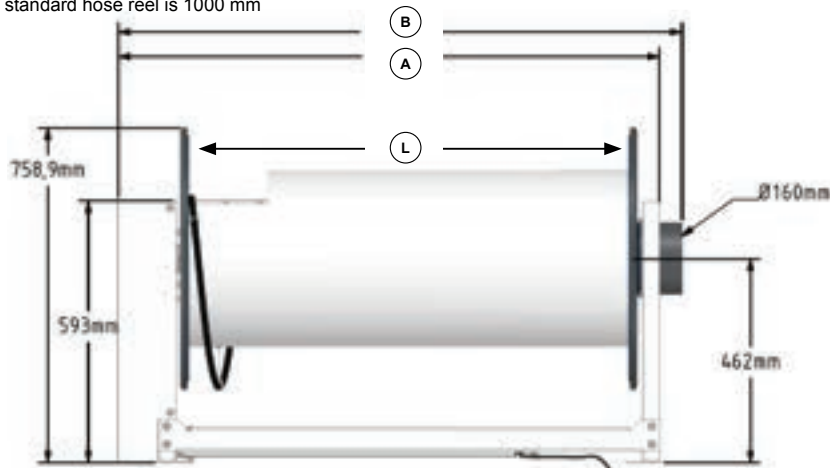
## Pressure drop



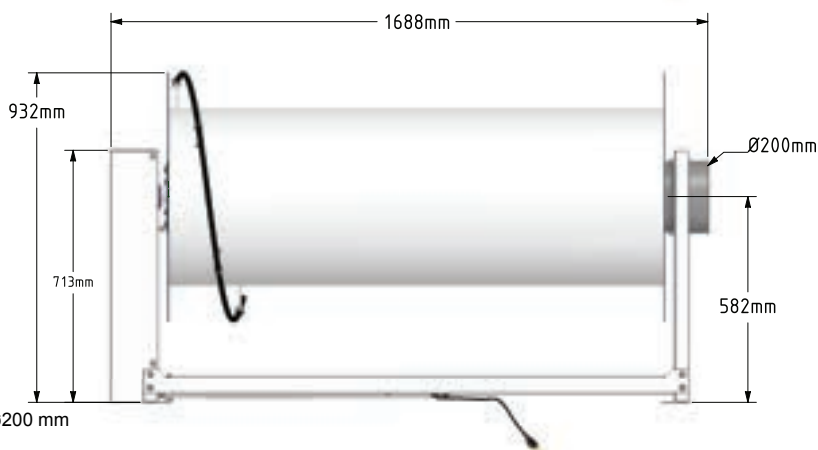
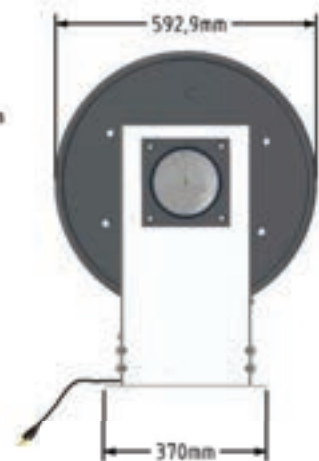
## Technical Drawing

GTE/GTS	L	A	B
750 mm	750 mm	980 mm	1031 mm
1000 mm	1000 mm	1230 mm	1281 mm
1400 mm	1400 mm	1630 mm	1681 mm

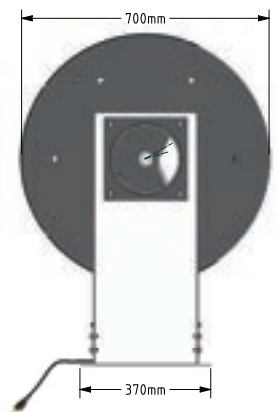
The drum on a standard hose reel is 1000 mm



Hose reel  $\varnothing 80, \varnothing 100, \varnothing 125, \varnothing 150\text{ mm}$



Hose reel  $\varnothing 200\text{ mm}$





Hose reel GTE and GTS - 5, 7,5 m 10 or 15 meter in  $\varnothing 80 - \varnothing 250\text{mm}$

## Ordering table

### GTS

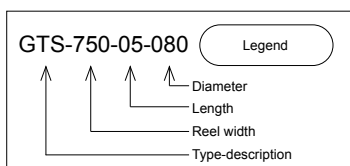
Manual spring operated hose reel incl. hose, ready to be mounted.

Art. No.	Description	Weight with hose	Weight without hose
04-750	GTS-750-05-080	44 kg	41 kg
04-751	GTS-750-07-080	45 kg	41 kg
04-752	GTS-750-10-080	47 kg	41 kg
04-753	GTS-750-05-100	45 kg	41 kg
04-754	GTS-750-07-100	46 kg	41 kg
04-754A	GTS-750-10-100	48 kg	41 kg
04-755	GTS-750-05-125	45 kg	41 kg
04-755A	GTS-750-07-125	47 kg	41 kg
04-756	GTS-750-05-150	46 kg	41 kg
04-756A	GTS-750-07-150	48 kg	41 kg
04-700	GTS-1000-05-080	47 kg	44 kg
04-701	GTS-1000-07-080	48 kg	44 kg
04-702	GTS-1000-10-080	50 kg	44 kg
04-703	GTS-1000-05-100	48 kg	44 kg
04-704	GTS-1000-07-100	49 kg	44 kg
04-705	GTS-1000-10-100	51 kg	44 kg
04-706	GTS-1000-05-125	48 kg	44 kg
04-707	GTS-1000-07-125	50 kg	44 kg
04-708	GTS-1000-10-125	53 kg	44 kg
04-709	GTS-1000-05-150	49 kg	44 kg
04-710	GTS-1000-07-150	51 kg	44 kg
04-711	GTS-1000-10-150	54 kg	44 kg

### GTE

Remote controlled hose reel (1x230V, 50Hz) incl. hose, ready to be mounted.

Art. No.	Description	Weight with hose	Weight without hose
04-760	GTE-750-05-080	39 kg	36 kg
04-761	GTE-750-07-080	40 kg	36 kg
04-762	GTE-750-10-080	42 kg	36 kg
04-763	GTE-750-05-100	40 kg	36 kg
04-764	GTE-750-07-100	42 kg	36 kg
04-764A	GTE-750-10-100	44 kg	36 kg
04-765A	GTE-750-05-125	41 kg	36 kg
04-765	GTE-750-07-125	43 kg	36 kg
04-767	GTE-750-05-150	42 kg	36 kg
04-766	GTE-750-07-150	44 kg	36 kg
04-714	GTE-1000-05-080	42 kg	39 kg
04-715	GTE-1000-07-080	43 kg	39 kg
04-716	GTE-1000-10-080	45 kg	39 kg
04-717	GTE-1000-05-100	43 kg	39 kg
04-718	GTE-1000-07-100	44 kg	39 kg
04-719	GTE-1000-10-100	46 kg	39 kg
04-720	GTE-1000-05-125	43 kg	39 kg
04-721	GTE-1000-07-125	45 kg	39 kg
04-722	GTE-1000-10-125	48 kg	39 kg
04-723	GTE-1000-05-150	44 kg	39 kg
04-724	GTE-1000-07-150	46 kg	39 kg
04-725	GTE-1000-10-150	49 kg	39 kg
04-730	GTE-1400-15-100	55 kg	44 kg
04-731	GTE-1400-15-125	57 kg	44 kg
04-732	GTE-1400-15-150	60 kg	44 kg
04-735	GTE-1400-05-200	72 kg	65 kg
04-736	GTE-1400-07-200	75 kg	65 kg
04-737	GTE-1400-10-200	79 kg	65 kg
04-738	GTE-1400-15-200	86 kg	65 kg
04-739	GTE-1700-xx-250 Without hose on reel	-	174 kg

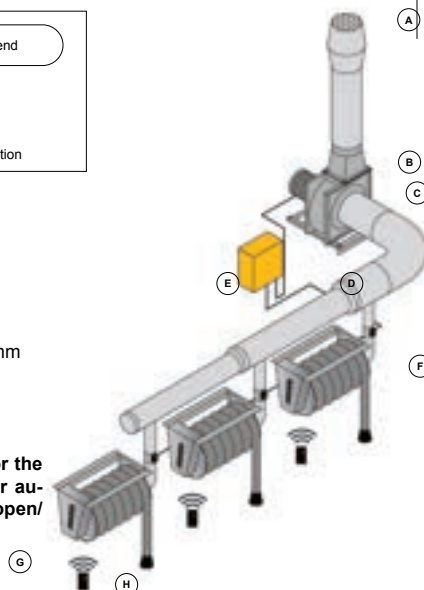


#### Example

- A: Outlet with jet hood
- B: Outlet flange
- C: Fan MSFG
- D: Wall mounting bracket
- E: Start/stop control LWS
- F: Quick turning damper  $\varnothing 160\text{ mm}$
- G: Hose Reel GTE
- H: Rubber Nozzle

#### OPTIONAL:

Choose a start/stop switch for the fan and the motor damper for automatic start of the fan and open/close of the damper.



Hose reel GTE and GTS - 5, 7,5 m 10 or 15 meter in  $\varnothing 80 - \varnothing 250\text{mm}$

### Hose reel $\varnothing 250$

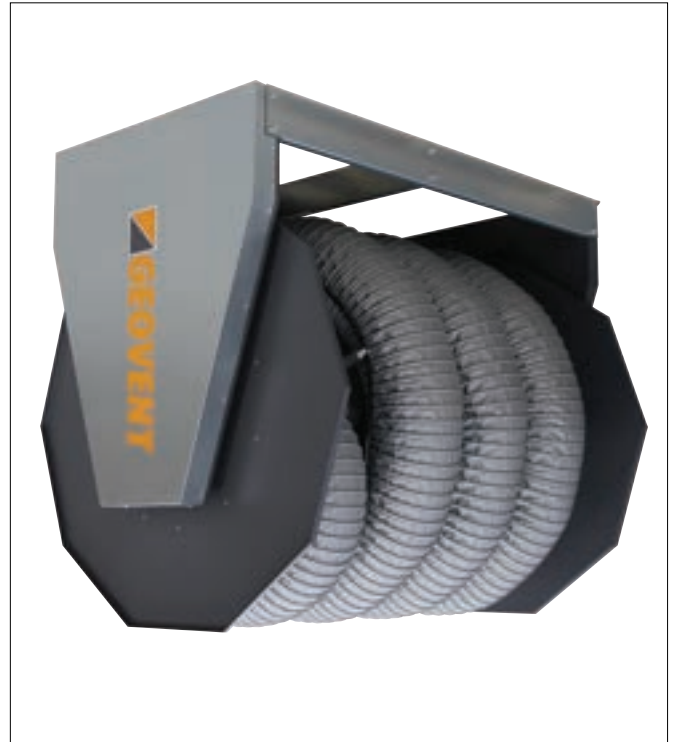
Geovent hose reel for hose  $\varnothing 250\text{ mm}$  is a unique solution with  $\varnothing 250\text{ mm}$  all the way through the hose reel.

A powerful motor, remote control and a well thought-out design provide efficient and easy operation.

Wireless remote control is included.

Hoses can be ordered separately in length and type as required. Can be used for high-temperature applications such as train exhaust.

Drum, cover and bracket:	Galvanized
Screws:	Galvanized
Side plates:	Galvanized, powder coated grey RAL 7015
Air flow rate:	Q = approx. 2.500 m <sup>3</sup> /h
Connection:	$\varnothing 250\text{ mm}$

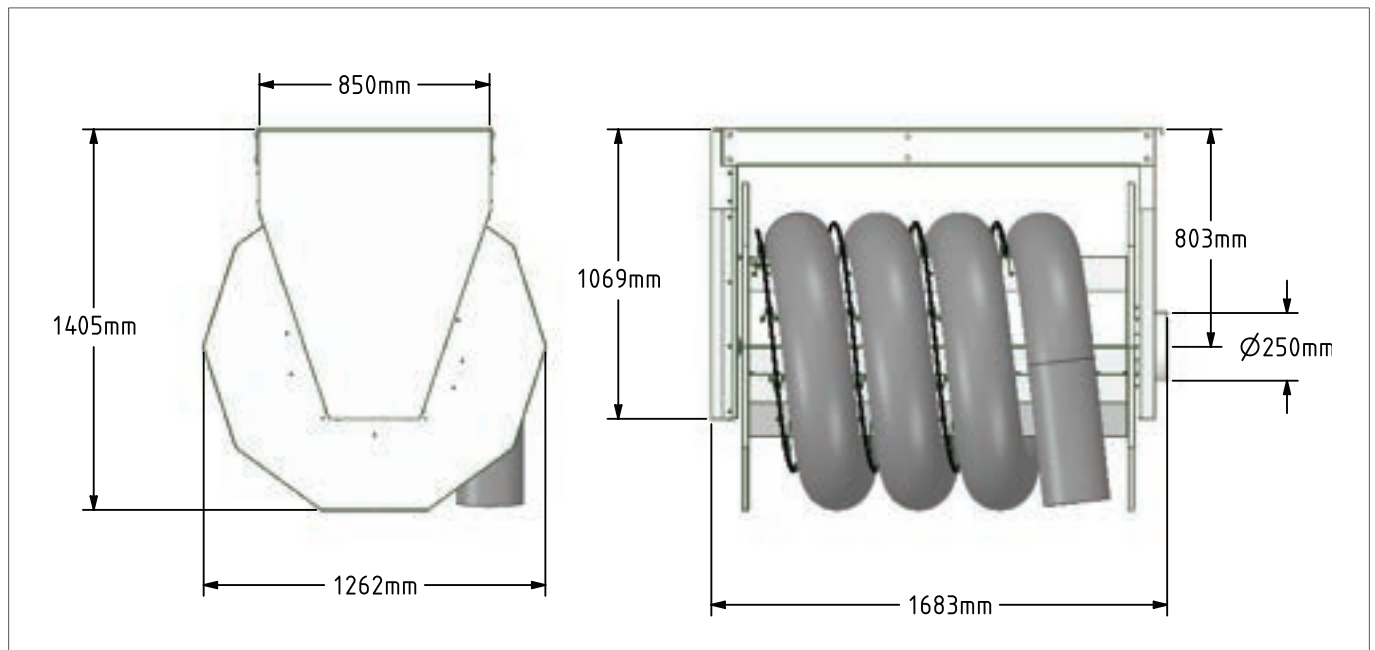


Hose reel  $\varnothing 250\text{ mm}$

### Ordering table

Art. No.	Description
04-739	Hose reel GTE-1700-XX-250, without hose on reel

### Dimensions



Model/Dimensions	Height [mm]	Width [mm]	Depth [mm]	$\varnothing$ [mm]	Weight [kg]
Hose reel GTE-1700-xx-250	1405	1683	1262	250	174