

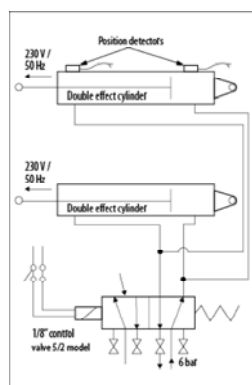
Pneumatic Sliding Damper



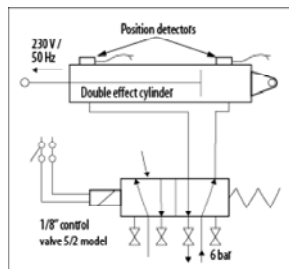
Sliding dampers with sealing, pneumatically controlled ADPD

Robust sliding dampers with a gasket and pneumatic cylinders. Sheet thickness of the housing/valve depends on the diameter. Up to Ø 200 mm with two gaskets (EPDM and plastic) but with only one plastic gasket from Ø 225 mm.

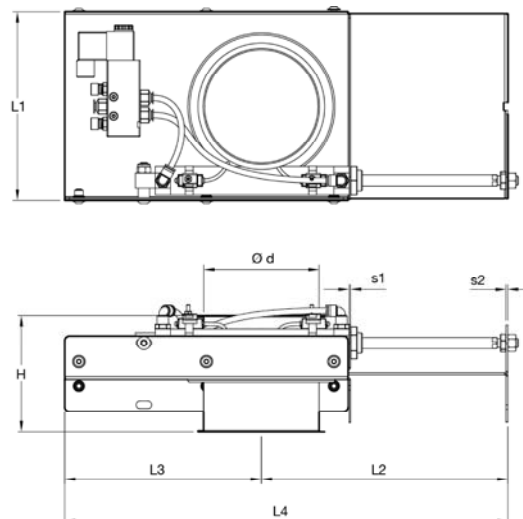
This sliding damper is often used in combination with a machine, where the valve opens or closes when turning the machine on or off. The valve can also be used as shut-off valve beneath a silo, filter installation, etc.



Connection of two linear pneumatic cylinders for pneumatic sliding dampers diameter Ø 180 up to Ø 630 mm.



Connection of a linear pneumatic cylinder for pneumatic dampers diameter Ø 80 up to Ø 160 mm.



Material

St. 12.03 – electrolytically galvanized with seals.

Type

- Ø 80 up to Ø 160 mm: 1 cylinder
- Ø 180 up to Ø 710 mm: 2 cylinders
- Cut sheets, bolt assembly, with 6 mm edges for lock rings.
- With rubber and plastic seals up to Ø 200 mm
- With plastic seals as of Ø 225 mm.

Options

- Protection house
- Other diameters
- Teflon gaskets
- Stainless steel (AISI 304)
- Position detectors

Please state the voltage when ordering:

24 V AC, 24 V DC, 220 V AC.

Ø mm	L1 mm	L2 mm	L3 mm	L4 mm	H mm	s1 mm	s2 mm
80	160	194	143	337	124	1.50	2.00
100	180	226	173	399	124	1.50	2.00
120	200	261	208	469	124	1.50	2.00
125	200	97	217	481	125	1.50	2.00
140	220	286	233	519	124	1.50	2.00
150	230	301	248	549	124	1.50	2.00
160	241	316	263	579	124	1.50	2.00
180	261	366	313	679	124	1.50	2.00
200	280	376	323	699	124	1.50	2.00
225	306	438	385	823	166	2.00	3.00
250	329	450	398	848	166	2.00	3.00
275	404	531	481	1012	166	2.00	3.00
300	429	543	494	1037	166	2.00	3.00
315	444	551	501	1052	166	2.00	3.00
350	479	608	559	1167	166	2.00	3.00
375	504	666	616	1282	166	2.00	3.00
400	529	678	633	1311	166	2.00	3.00
450	582	789	678	1467	224	3.00	4.00
500	632	829	778	1607	224	3.00	4.00
550	734	936	878	1814	224	3.00	4.00
560	746	944	883	1827	224	3.00	4.00
600	789	1009	948	1957	224	3.00	4.00
650	836	1069	1008	2077	224	3.00	4.00
700	886	1174	1113	2287	224	3.00	4.00
710	896	1197	1100	2297	224	3.00	4.00

For all diameters above 400mm, please get in touch at
info@dustspares.co.uk