

Product Data Sheet

KX308 & KX309

Replacement Autoshaker timer for shaker filters



FEATURES

- The KX308 & KX309 replacement Autoshaker timer for DCE shaker filters (and other manufacturers) are available in the following voltages:
 - 24Vdc
 - 24Vac
 - 110Vac
 - 240Vac
 - 415Vac
- The KX308 & KX309 timers will fit a multitude of different Autoshaker starter panels and can be easily retro-fitted with alternative parts from different manufacturers.
- Both units are equipped with a visual LED indicator that illuminates as follows: Red = Dwell (Run down active), Green = Run (Shaker running).
- The KX308 has pre set times

Dwell (Run down period = 60 sec. typ.)	Run (Shake down period = 30 sec. typ.)
--	--

(Standard for DCE filters)

The KX309 has adjustable times

Dwell (Run down period = 0-240 sec. typ.)	Run (Shake down period = 0-240 sec. typ.)
---	---
- Ordering Information: - Please specify KX308 or KX309 and operating voltage e.g. KX308-415Vac

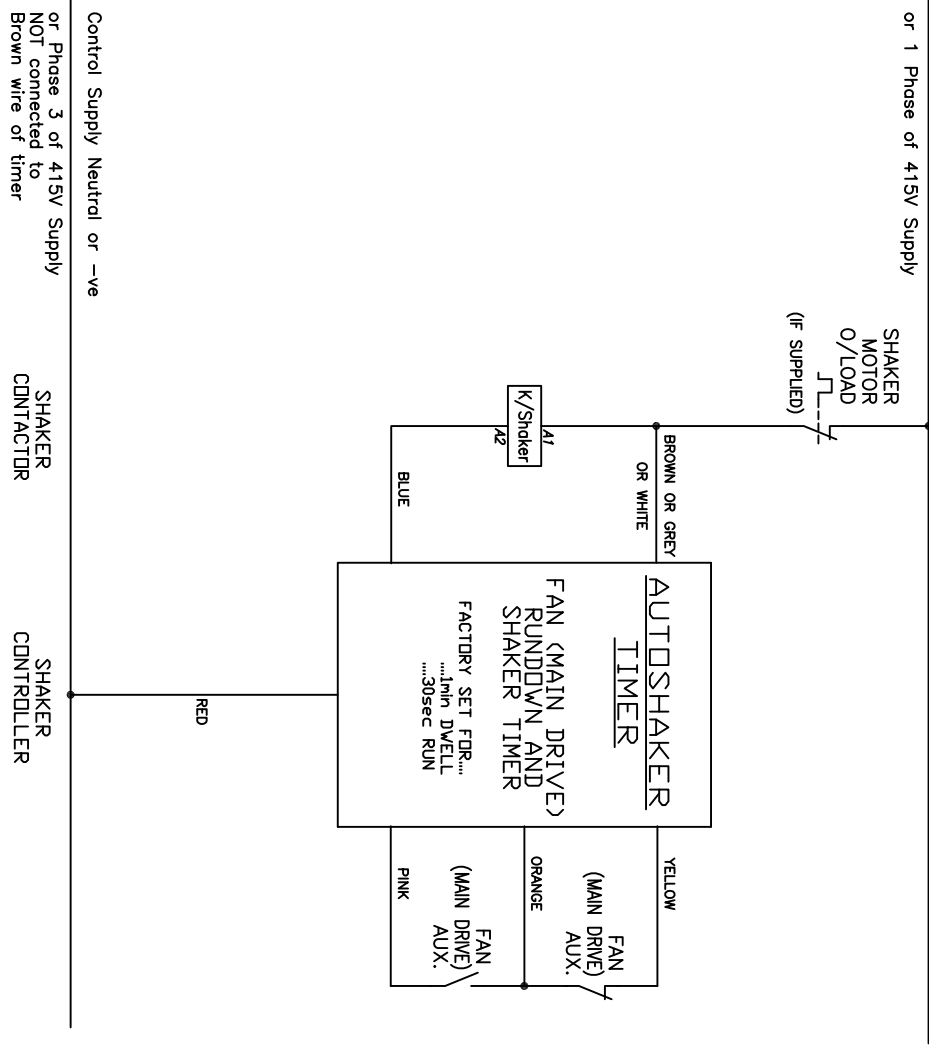
Contents

Features	1
Technical Drawings	2 - 4

CCT REV.A/06.11.2014

DISCONNECT OLD AUTOSHAKER TIMER (BELOW) AND REMOVE

NOTE THAT THE CONNECTIONS TO THE COIL OF THE SHAKER CONTACTOR WILL BE REVERSED FOR THE KX308/309.
 NOTE THAT THE NORMALLY OPEN FAN (MAIN DRIVE) AUX CONTACT BECOMES REDUNDANT ON THE KX308/309
 STRICT OBSERVATION OF THE ORIENTATION OF THE WIRE COLOURS IS CRITICAL FOR THE CORRECT OPERATION OF THE KX308/309



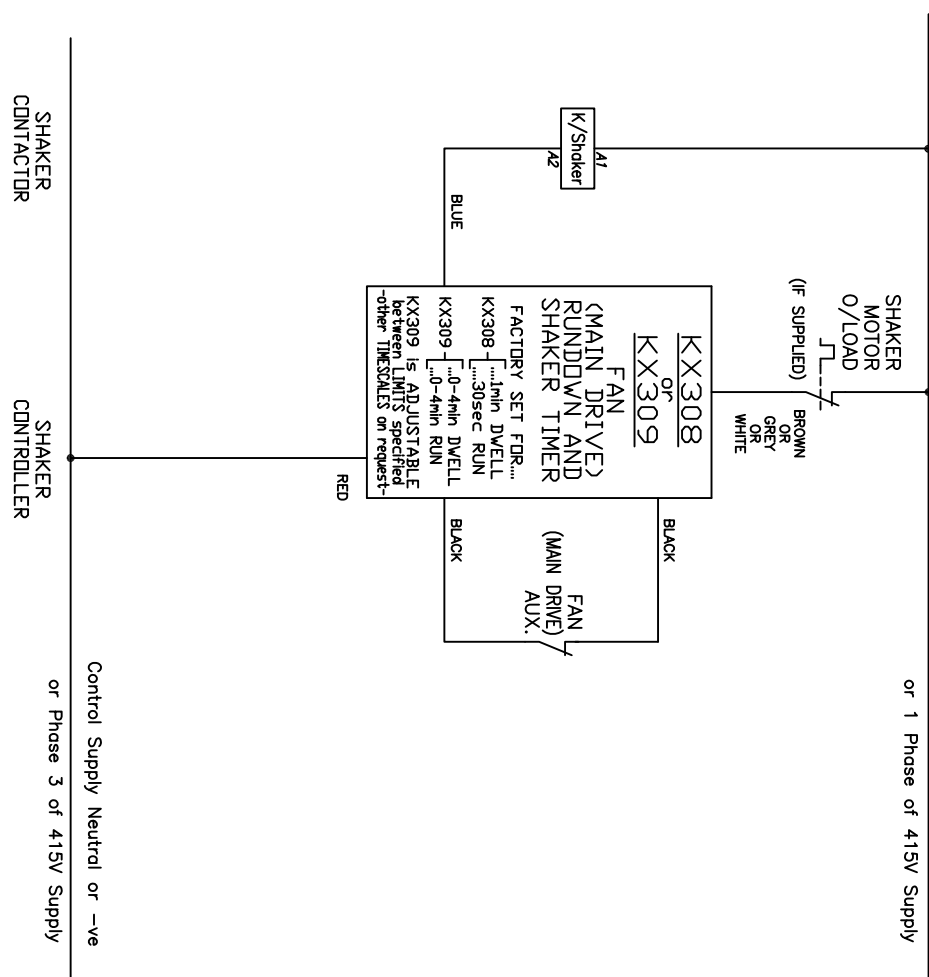
ISOLATE THE PANEL BEFORE ATTEMPTING THIS INSTALLATION

OBSERVE AND PRACTISE ALL SAFETY PROCEDURES AND CHECKS

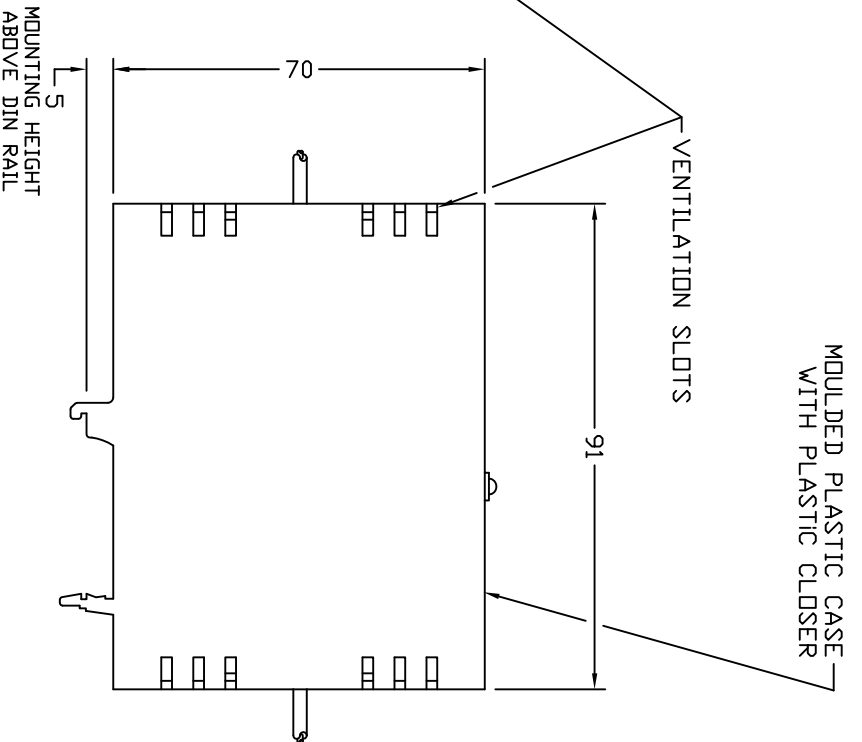
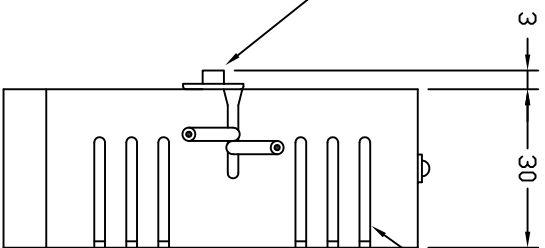
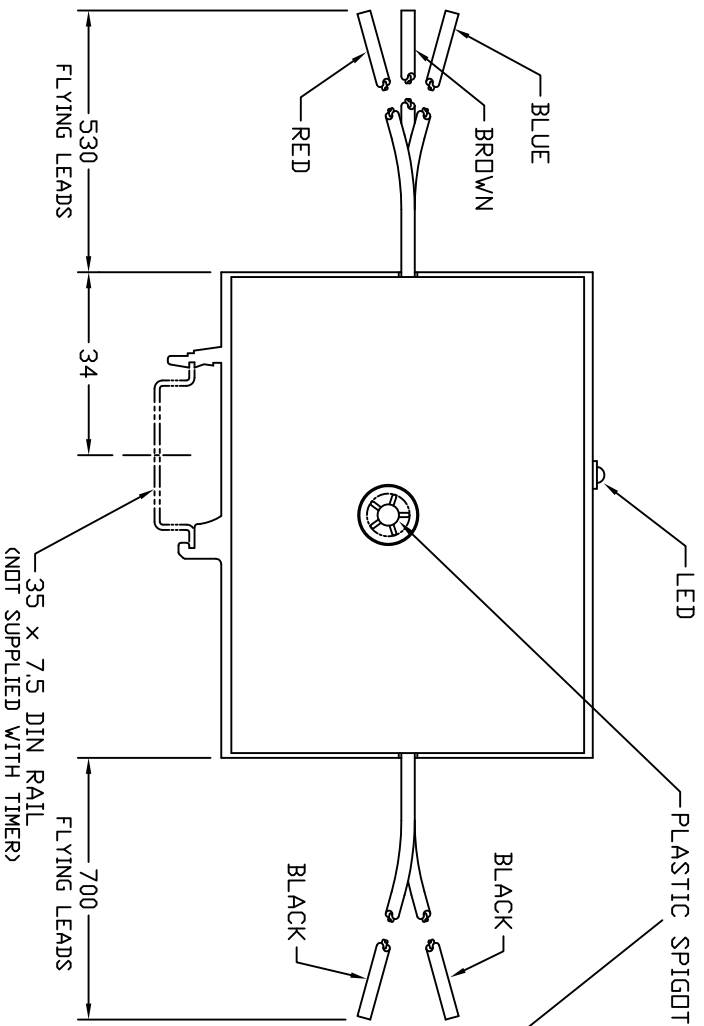
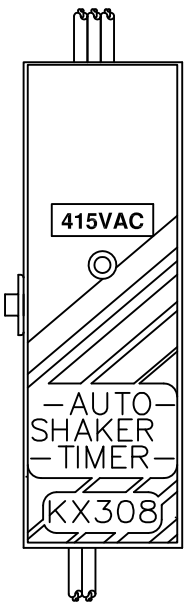
ALL ELECTRICAL WORK SHOULD BE CARRIED OUT BY A SUITABLY QUALIFIED AND COMPETENT ELECTRICIAN

INSTALL NEW TIMER (KX308/309) AND CONNECT INTO CONTROL CIRCUIT AS SHOWN BELOW

MAKE THE CIRCUIT TO THE NOW REDUNDANT NORMALLY OPEN FAN (MAIN DRIVE) AUX CONTACT SAFE BY COMPLETELY REMOVING THE EXISTING WIRING
 STRICT OBSERVATION OF THE ORIENTATION OF THE WIRE COLOURS IS CRITICAL FOR THE CORRECT OPERATION OF THE KX308/309 AND THE SAFETY OF THE PANEL.

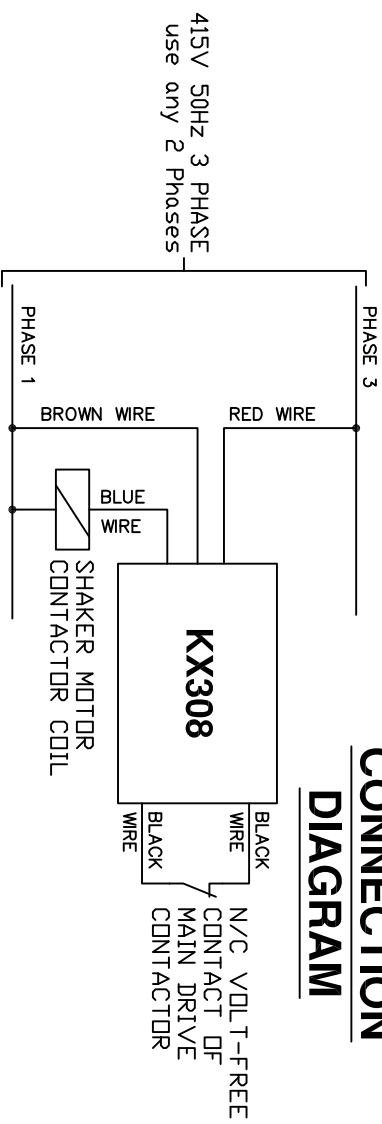


Part No:	Title: KX308/309 FOR OLD AUTOSHAKER TIMER WIRING MODIFICATION CIRCUIT DIAGRAM		
D	TITLE/BLCK REVISED.	08/07/05	
C	415V 3 Ph REFERENCES ADDED.	16/04/02	
B	ZX309 OPTIION & GREY WIRE ADDED.	04/02/02	
Issue	Description	Date	
Drwn.	JCA	16.05.01	THIS DRAWING IS COPYRIGHT AND MAY NOT BE COPIED, TRANSMITTED NOR USED FOR ANY PURPOSE OTHER THAN THAT FOR WHICH IT WAS INTENDED, WITHOUT THEIR WRITTEN PERMISSION.
Chkd.	/	/	
Appd.	/	/	
CADFile:	STD\STK001D	Plot Date:	08.07.05
Dwg. No.	STKX001		Rev. D
Sheet 1 of 1			



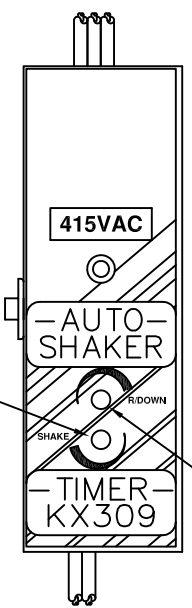
MOULDED PLASTIC CASE WITH PLASTIC CLOSER

CONNECTION DIAGRAM



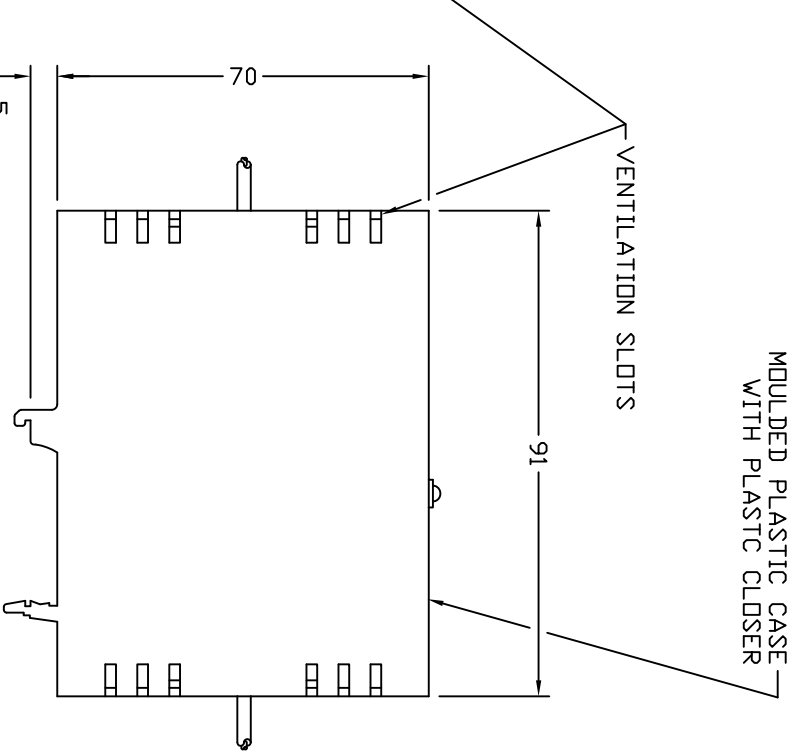
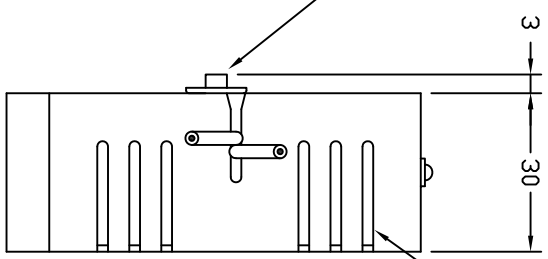
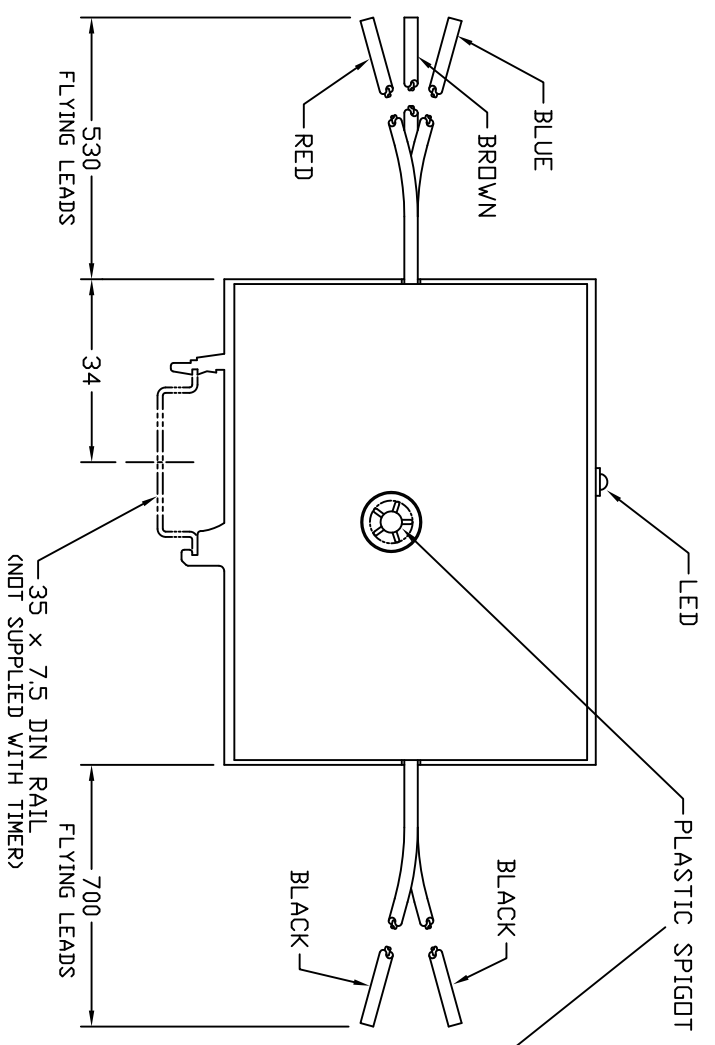
ALL DIMENSIONS IN MILLIMETRES
THIRD ANGLE PROJECTION

Part No:		KX308/415	
Title:	KX308 - 415V AUTOSHAKER/REGEN TIMER GENERAL ARRANGEMENT		
Issue	Description	Date	
A	PRELIMINARY	11.05.04	
B	CONTROL PHASES CHANGED	13.11.13	
Drwn.	LOF	11.05.04	
Chkd.	/	/	
Appd.	/	/	
CADFile:	ASHAKER\3084151B	Plot Date:	11.05.04
Dwg. No.	3084151		Rev. B
Sheet	1 of 1		

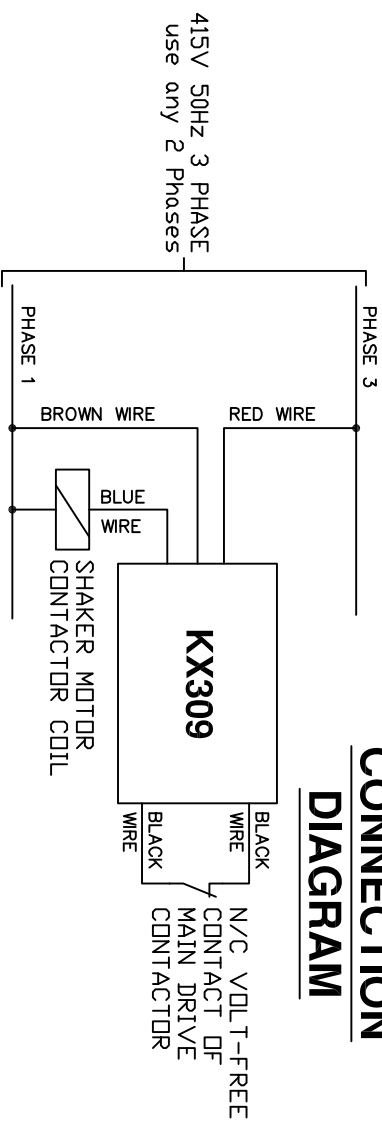


SCREWDRIVER ACCESS TO RUNDOWN TIME ADJUSTER

SCREWDRIVER ACCESS TO SHAKE TIME ADJUSTER



CONNECTION DIAGRAM



415V 50Hz 3 PHASE
use any 2 Phases

ALL DIMENSIONS IN MILLIMETRES
THIRD ANGLE PROJECTION

Part No:	KX309/415	
Title:	KX309 - 415V AUTOSHAKER/REGEN ADJUSTABLE TIMER GENERAL ARRANGEMENT	
Issue	Description	Date
A	PRELIMINARY	11.05.04
B	CONTROL PHASES CHANGED	13.11.13
Drwn.	LOF	11.05.04
Chkd.	/	/
Appd.	/	/
CADFile:	ASHAKER\3094151B	Plot Date: 11.05.04
Dwg. No.	3094151	
Sheet	1 of 1	
Rev.	B	